



October 2024

Elwha News

čʔéʔxʷaʔ syácam

Congratulations to Master Carver Darrell Charles, Jr.

Darrell's work was highlighted at the Port Angeles Fine Arts Center as part of their "Beauty and Resilience" show, to highlight the Elwha River Restoration. Darrell also participated in an artists demonstration as part of the gallery's activities.

Darrell is always creating, always working and contributing where he can to keep the traditions of art, carving, canoe making and design-work alive, using art expression to share the history of the Elwha Klallam People for future generations.



Councilwoman Tia Skerbeck Updates

35th Annual Washington Centennial Accord

The 35th annual Washington Centennial Accord took place last month in Suquamish. This is an important in-person gathering of Tribal leaders and State executive staff to facilitate government to government relationship and bring up issues that need attention and resolution. This was Governor Inslee's last accord, and a lot of talk was around transitioning to a new Governor and how to keep moving forward with work and supporting Tribal sovereignty. State agency leadership and their tribal liaisons were also attendance, including our own tribal members Brenda and Michelle, whom work for state agencies supporting tribal communities in carrying out their work.



Elwha River Ceremonial and Subsistence Fishery

The community hook and line fishing class last month was well attended, with a great supply of fishing supplies handed out to those that were able to participate. This class was an amazing learning experience for young and elder fishers to learn the basics of hook and line fishing. It will be exciting to see folks out on the river again this month fishing, this is a special time of year that bring many families and community together.



September 1st marked my first 90 days as a member on the Business Committee. These past months have been busy with learning the fine details of being on council, reviewing documents, becoming a regular attendee at gov't to gov't meetings, and many internal meetings, listening to the community, and visiting tribal departments. A lot of work takes place behind the scenes to keep our government running and provide services to our community. I attend prepared, with the best intent for our community in mind, and I am working to finding ways communicate regularly, track progress, and continue to keep the community informed. Camp Crier hasn't been working for a lot of folks, and I eager to find a better solution that meets the needs of our community. This newsletter is one way of communication that remains consistent, yet is not always the most timely because of the delay in editing, printing, and mailing.

The land by the Casino is almost cleared and leveled for use for the 2025 Paddle to Elwha, final decisions are coming soon on what is best suited at this and other sites throughout the community.

I am hoping that we are able to coordinate a "Get Out The Vote" event to encourage voting in the upcoming Nov 5th elections, this election season is very important that we all vote! Every vote counts.

Flu & COVID season and vaccines

Now is the time to schedule your annual flu and COVID vaccines. As we move into fall and spend more time indoors, we get sicker and need protection from yearly vaccines to keep our immunity levels up. Call our healthcare provider or the Lower Elwha Health Department to schedule your 2024-2025 flu and COVID vaccines 360-452-6252

Respiratory Virus Guidance Snapshot

Core prevention strategies

- Immunizations
- Hygiene
- Steps for Cleaner Air
- Treatment
- Stay Home and Prevent Spread*

Additional prevention strategies

- Masks
- Distancing
- Tests

***Stay home and away from others until, for 24 hours BOTH:**

- Your symptoms are getting better
- You are fever-free (without meds)

Then take added precaution for the next 5 days

Layering prevention strategies can be especially helpful when:

- ✓ Respiratory viruses are causing a lot of illness in your community
- ✓ You or those around you have risk factors for severe illness
- ✓ You or those around you were recently exposed, are sick, or are recovering



Happy Birthday Dale!! I hope you have a great birthday.
Love always Bub



Wishing my gorgeous granddaughter Jhené Rose a very happy birthday October 19th.
I love you so so much.
Love always and forever Grandma Dorene

BAKED GOODS NEEDED!

CAKES CUP CAKES COOKIES COVERED PRETZEL STICKS BROWNIES PIES PUDDING CUPS

WINNER WINNER CHICKEN DINNER

Please bring your donated baked goods to the **LEKT dining hall** on **Wednesday October 30th** after 2:00 pm

1 2 3 4 5 6 7 8

Congratulations

Shyana

Neah Bay Lady Reds

Volleyball Manager



Elders Information

Lunch – 55 years and older

Monthly Assistance Checks – Will be in the mail every 3rd Friday of the month.

Energy Assistance – 60 +

Funds added to your account in December

Shopping Day – Tuesday's. Call Samantha Acosta to arrange pick up 360.406.1572

Monthly Meeting – Last Monday of the month.

Located In the dining hall @ 11:45am.

Exercise Class – with Jason Wheeler in the Gym

Mon. 10 & 11 am, Wed. 11 am , & Friday 10 & 11 am

Good News: Our Water Systems are Lead-Free!

We are pleased to announce that our water systems have been thoroughly evaluated, and we can confirm that there are no lead service lines (LSLs) in our distribution network. This finding is part of our ongoing commitment to ensuring safe and clean drinking water for our community.

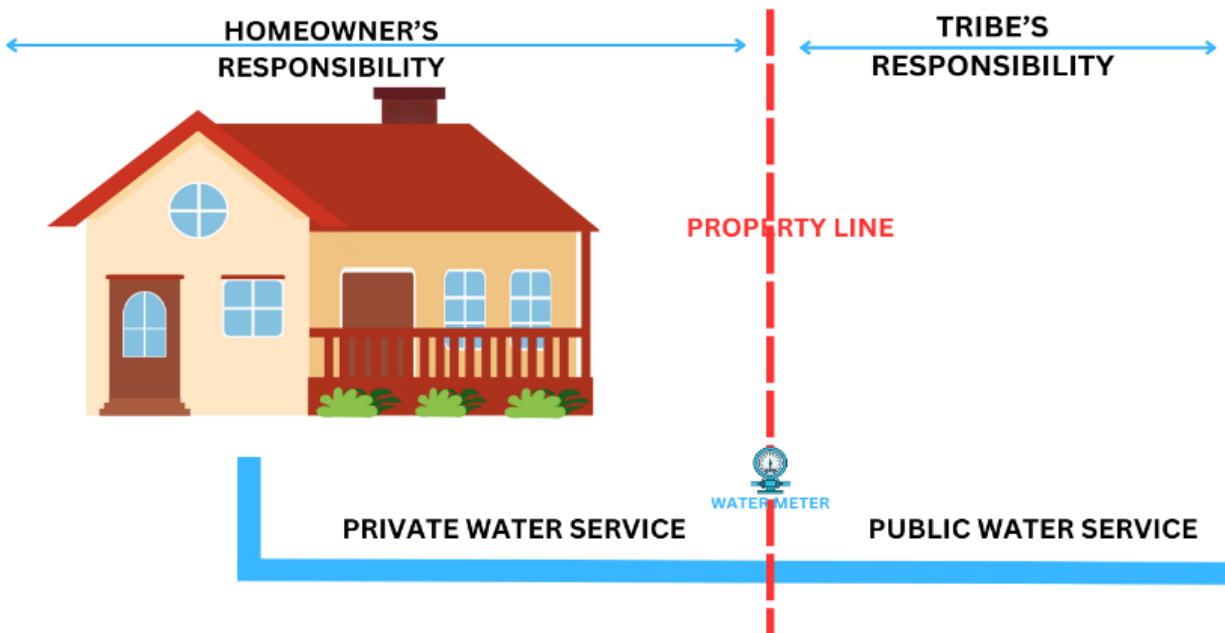
Understanding Lead Service Lines

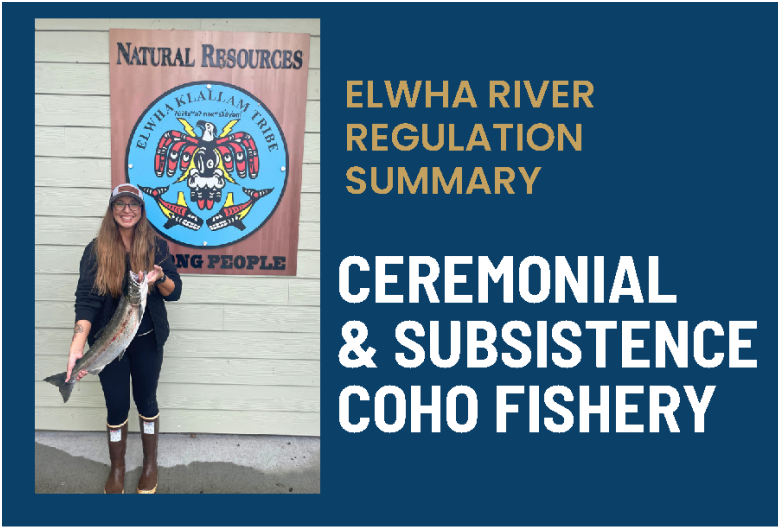
The most common sources of lead in drinking water are lead pipes (service lines). Lead service lines can pose a health risk by leaching lead into drinking water. To ensure the safety of our water supply, and to conform to the Environmental Protection Agency reporting requirements, the Lower Elwha Klallam Tribe Utilities Department developed a service line inventory of our underground water service/distribution lines for both the Lower Elwha Valley and the Elwha Heights water systems.

The service line inventory was completed for the underground public and private water service/distribution lines up to the structure (as shown in the graphic below). Indoor plumbing was not evaluated and is the responsibility of the home/business owner.

After a thorough review of our service line inventory, we confirm that our water distribution systems contain no Lead Service Lines (LSLs). This determination is based on evidence-based records, methods, and techniques used during our inventory process.

Ensuring safe drinking water is our top priority. We will continue to monitor our infrastructure and water quality to maintain these standards. If you have any questions or concerns, please feel free to reach out to Public Works Utility Manager Karl Majerle at 360-565-7272 or Karl.Majerle@elwha.org.





ELWHA RIVER REGULATION SUMMARY

CEREMONIAL & SUBSISTENCE COHO FISHERY

Opens September 23rd*

Closes October 31st or until quota taken

Where: Elwha River Rd bridge to the mouth of the river; West side limited to public access locations

4 FISH PER FISHER PER DAY

When: Mon through Sunday 7AM – 6PM

**set net fishery opens October 8th;*

M, W, S 7:30AM-4:30PM

Gear

Hook-and-line, dip nets, barbed hooks allowed; snagging allowed AFTER Oct 21st if quota remains



Set nets: Oct 8th –31st or when quota reached

Set net stations will be installed near the river mouth; a lottery system will be used to select fishers for each station. Tribe-owned nets will be deployed and remain at each site for the duration of the fishery. See complete regulations for additional details.

Catch Reporting

Elwha subsistence catch cards will be issued by Natural Resources and must be with the fisher while on the river.

A catch recording station will be located at the Natural Resources Office and staffed M-F 8am-5pm and Sat/ Sun 6pm-7pm at 760 Stratton Rd. Data can also be collected by NR staff on the river.

Fishers coming off the river after hours are asked to keep fish on ice overnight (ice provided at Natural Resources and Elwha Food & Fuel) and check in next business morning, if possible.

How to register

Register at the Department of Natural Resources prior to participating **760 Stratton Rd | 360-457-4012 (ext. 7486)**

Fishers must be enrolled members of LEKT and 13 years of age or older to receive a subsistence catch reporting card.

Fishers must be at least 18 years old to be entered into the set net lottery. Youth accompanied with an adult may help out at set net locations.

Elders who wish to have a designated fisher for them can register with Natural Resources. Designated fishers must register with Natural Resources and receive subsistence fishing cards for designated elders.



The sale of ceremonial or subsistence catch is prohibited. **COMPLETE REGULATION DETAILS AVAILABLE AT NATURAL RESOURCES**

Sexual Assault Response Team (SART)

Get free, confidential support whenever you're ready.



Lower Elwha Health Clinic
243511 Hwy 101 West
Port Angeles, WA 98363
(360) 452-6252, Ext. 1
After Hours: (541) 526-9256



Whether you have experienced sexual assault yourself, or want to know more about how to help your child, a friend or someone else, we're here 24/7 with support and information to empower you to take your next steps.

SART Team Members: January Austin, ND; Lillian Easton, ARNP; Melissa Ellis, RN; and Iliana Jones

We provide support and services to youth (18 years and under) in the LEKT Tribal Community, Clallam County and surrounding Tribal Communities. SART can provide pediatric forensic exams, advocacy, support and referrals to youth and families in need of assistance.



Farewell Dr. Cody Welcome Marie Miller-Bryant!



We are so excited to welcome Marie Miller-Bryant to the Dental Clinic team!

Marie started as a dental scheduler in late August—just in time to cover the phones while Tracey was on vacation. She has already proved to be a quick learner and a valuable part of the dental team. Welcome Marie!

We are also very sad to see Dr. Cody go. It was great having you here, Dr. Cody—you will be missed!

Do your kids need dental exams and cleanings?

Parent-Teacher conferences are the last week of October

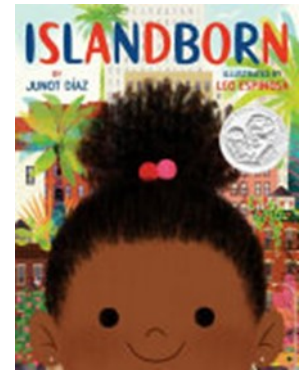
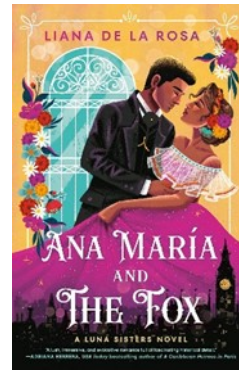
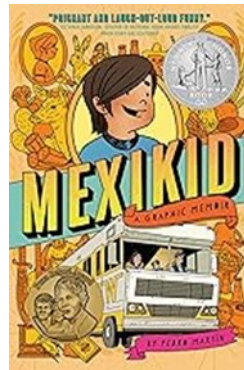
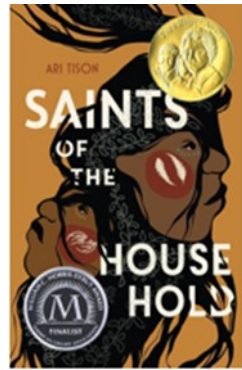
and it is a great time to schedule your kiddos for a dental check-up and cleaning. Call (360) 452-6252 x2 today to schedule!

PS: Did you know October is dental hygiene month?? Great time to come visit the dentist—especially with all the sweets available during Halloween and the holiday season.



October is Hispanic Heritage Month

Officially beginning September 15th and running through October 15th, Hispanic Heritage Month honors the cultures and contributions of the Hispanic and Latinx communities to American culture and history. The Library will be celebrating for the entire month of October by featuring books by Hispanic and Latinx authors. Here are a few of our favorites:



- ◆ **Alebrijes by Donna Barba Higuera**
- ◆ **Mexikid by Pedro Martín**—Pura Belpré Award winner and Newbery Honor book
- ◆ **Islandborn by Junot Díaz**—Pura Belpré Honor Book
- ◆ **Saints of the Household by Ari Tison**—Pura Belpré Award and Walter Dean Myers Award winner
- ◆ **Ana María and the Fox by Liana De la Rosa**

Weekly Classes have Restarted

After a long summer and a busy September, the Library's weekly technology classes have started again! The schedule can be found below. Classes labeled with NSDL have optional certification exams which can be used in job hunting. All classes are Wednesdays from 5pm-6pm and are offered through Zoom at this link <https://us06web.zoom.us/j/83804165861?pwd=VPd9hYljbEbl2FtQdY2sSEUpDOEZ5F.1> and may be attended in-person upon request. One-on-one tutoring is also available upon request on a variety of digital literacy subjects; please email Jason M at Jason.morris@elwha.org for more information. Additionally, if there are days or times which work better for you to attend classes, please email Jason with your preferences.

Oct. 2: Intro. to MS Excel (NSDL)

Oct. 9: Internet Safety for Parents

Oct. 16: Using Email (NSDL)

Oct. 23: Career Search Skills & Resume Writing

Oct. 30: Your Digital Footprint (NSDL)

Nov. 6: Intro. to MS Word (NSDL)

September 2024 Newsletter

Klallam Strong: Nutrition & Diabetes Newsletter

Dawn Travelstead, RD, MS,CDE, Lower Elwha Health Clinic

In this issue:

- * Fermented Foods
- * Shortbread
- * Quote



Fermented Foods

Health benefits come from the live microbes that thrive in fermented foods.

The digestive tract contains trillions of bacteria that help us to digest and absorb our food.

Fermented foods also lower inflammation and fine tunes our immune system. These foods are good for kids and adults!

The gut microbiome can become unhealthy when we eat processed foods and sugar.

Try adding a fermented food 3-5 times a week. These include:

- Greek yogurt
- Yeasty sourdough bread from a bakery (not store bought)
- Pickles
- Sauerkraut
- Kombucha
- Any pickled vegetables

Spruce Tip Shortbread-high in Vitamin C

(Courtesy from a tribe in Alaska)

- 1/4 c fresh spruce tips
- 1/4 c sugar
- 1 c. flour
- 1/2 c butter, cut into 1/2 inch chunks



Preheat oven to 300F. Add sugar and spruce tips in food processor and pulse till finely chopped. Add flour and pulse to mix well. Add butter and pulse until dough hold together.

Place dough on parchment paper, roll into square. Dust with flour to roll out dough. Cut into strips. Place parchment paper on cookie sheet, add the shortbread. Bake for 25 minutes till brown.

Quote: “Take care of your body, it’s the only place to live”



Please call me if you have any nutrition issues for your family that you would like assistance with from me. No charge for tribal member's and their family. 360-912-1500



BASIC BUDGETING

Learn from the pros! First Fed will be joining us onsite to teach the best in budgeting skills and techniques. This class counts toward TANF, GA & Healing Court requirements. Snacks provided!

Thursday, October 10th | 5pm

Elwha Klallam Heritage Center
401 E First St
Port Angeles, WA 98362
(360) 417-8545

Sign Up ▶▶▶



Let's Get Vaccinated



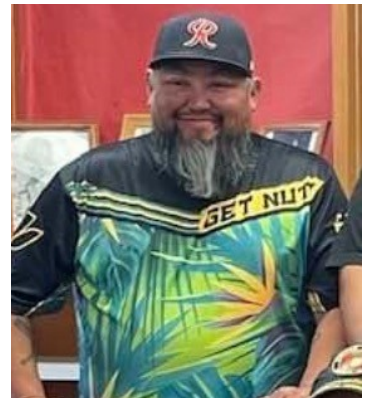
The NEW 2024-2025 COVID vaccine and FLU vaccine!

To schedule call LEHD at 360-452-6252



Happy birthday to my grandson Maurice. Love you always and forever. Grandma Dorene

This guy (Levi) I mean Lonnie. Wishing you a very happy birthday cousin. Love you always From Dorene



Klallam Language Department
Middle School News

KLALLAM REPRESENTATION AT STEVENS MIDDLE SCHOOL



Klallam Language Class Continues

The Klallam Language will be offered for a 4th year in a row at Stevens Middle School. Harmony Arakawa and Jonathan Arakawa will co-teach the class. 24 students are currently enrolled in the semester long class. Students will learn the Klallam language through speaking, listening, reading, and writing activities. They will gain a comprehensive understanding of both pre-contact and contemporary history of the Klallam people.



Klallam Welcome at SMS Assembly

The LEKT Culture Department collaborated with Native American middle school students to provide a traditional welcome at the first assembly of the school year. The event featured the Klallam Welcome Song, followed by a Territory Acknowledgment read by Elwha Warrior Princess, Skylar Wheeler. Skylar, a member of the Charles and Wheeler families, delivered the acknowledgment with pride and respect. The tradition of having a song sung at assemblies started last school year.

Submitted by Jonathan Arakawa, LEKT Middle School Klallam Language Teacher

LOWER ELWHA FAMILY ADVOCACY PROGRAM

We help Tribal and Community Members with:

- Advocacy - Domestic & Dating Violence, Sexual Assault, Stalking, and Sex Trafficking.
- Support with Protection Orders
- Address Confidentiality Program
- Resources & Referrals
- Case Management Assistance
- Prevention & Awareness
- Crisis Intervention Support
- Support Groups

Contact Information
 Beatriz Arakawa, Program Manager
 3080 Lower Elwha Road
 Port Angeles, WA 98363
 Office: 360-565-7257, Ext. 7453
 Cell: 360-460-1745
 Emergency: 360-775-9346



Mission: Victim's/Survivor's Safety and Autonomy through Advocacy and Awareness

YOU ARE NOT ALONE!

October 2024

Dearest Lower Elwha Klallam Tribal Community members and Readers,

Please join of our many exciting events: Soup for the Soul support circle; Medallion Earrings making; two schedules of LGBTQ, Two-Spirit Community, and Their Allies support group (ending Monday, November 6 and Wednesday, November 25); Domestic Violence Awareness exhibit of silhouettes Monday, October 21-25 at Elwha Heritage Center; and the **2024 Annual Domestic Violence Awareness Walk**. *The “Breaking the Silence: ča?xw’éyu st cə səmíxwtxw”* will be held on Wednesday, October 23 at Elwha Heritage Center to Healthy Families of Clallam County. There will be resource tables from 1:30 pm-4:30 pm. The walk starts at 3:30 pm from Heritage Center to Healthy Families and back to Heritage Center for a dinner and more activities. This will be in commemoration of the October is National Domestic Violence Awareness/Action Month.

How can we – LEFA staff be of your service? You can reach out to us in many ways. You don’t have to be alone to solve your problems about housing, financial, legal or many more related to domestic violence, dating violence, sex trafficking, stalking, and sexual assault/abuse. We are here for you!

To all agency partners, collaborators, community members thank you for your continuing support.

Happy Indigenous Peoples’ Day! Happy Halloween!



The LEFA

Grateful to our grant funder:

“This project was supported by Grant No. _15JOVW22GG3388TRIB_ awarded by the Office on Violence Against Women, U.S. Department of Justice. The opinions, findings, conclusions, and recommendations expressed in this publication/program/exhibition are those of the author(s) and do not necessarily reflect the views of the U.S. Department of Justice.” OVV

2024 General Election Clallam County Tuesday, November 5, 2024

Office Hours M-F 8:00 a.m. - 4:30 p.m.
Election Day Hours 8:00 a.m. - 8:00 p.m.

What's on the Ballot?

Initiative to the People
Initiative Measure No. 2066

Initiative to the Legislature
Initiative Measure No. 2109

Initiative to the Legislature
Initiative Measure No. 2117

Initiative to the Legislature
Initiative Measure No. 2124

U.S. President/Vice President

U.S. Senator

Congressional District 6
U.S. Representative

Governor

Lt. Governor

Secretary of State

State Treasurer

State Auditor

Attorney General

Commissioner of Public Lands

Superintendent of Public
Instruction

Insurance Commissioner

Legislative District 24
State Senator

Legislative District 24
State Representative Pos. 1

Legislative District 24
State Representative Pos. 2

County Commissioner
District No. 2

State Supreme Court
Justice Pos. 2

State Supreme Court
Justice Pos. 8

State Supreme Court
Justice Pos. 9

Court of Appeals
Division 2, District 2
Judge Pos. 2

Clallam Superior Court
Judge Pos. 1

Clallam Superior Court
Judge Pos. 2

Clallam Superior Court
Judge Pos. 3

Public Utility District No. 1
Commissioner District No. 2

Public Utility District No. 1
Commissioner District No. 3

Port Angeles School District
No. 121
Proposition No. 1
Replacement Educational
Programs and Operation Levy

Port Angeles School District
No. 121
Proposition No. 2
Bonds to Replace and
Renovate Deteriorating
Schools and Improve Safety

Fire Protection District No. 2
Proposition No. 1
Property Tax Levy For Fire
Protection and Emergency
Medical Services

Clallam County Charter Review
Commission
Commissioner District No. 1

Clallam County Charter Review
Commission
Commissioner District No. 2

Clallam County Charter Review
Commission
Commissioner District No. 3

Key Dates and Places

September 20: Military and overseas ballots mailed.

October 16: Ballots mailed to domestic voters (in the United States).

October 28: Cutoff to register online or through the mail.

November 5: Deadline to return ballots or register to vote in person for this election. Ballots must be postmarked no later than Election Day or put in an Official Ballot Drop Box by 8 p.m.

November 26: Election results are certified.

Official Ballot Drop Box Locations:

Carlsborg: 261461 Hwy 101
Near Sunny Farms, adjacent to Mill Rd.

Clallam Bay: 16990 Hwy 112
In front of the Clallam Bay Branch Library

Forks: 500 E Division St.
Outside Forks City Hall

Neah Bay: 1450 Bayview Ave.
In front of Washburn's General Store by the left Totem Pole

Port Angeles: 223 E 4th St.
In the Courthouse circular drive
On the sidewalk across from disabled parking
In the Elections and Voter Registration Office (Room 042, on the lower level)

Seki: 15 Sekiu Airport Rd.
At the PUD, in the drive-up lane

Sequim: 651 W Washington St.
In the parking lot

Note to Voters

Not all of the offices listed will be on your ballot. The residential address on your voter registration record determines what/who you are eligible to vote for. Only those choices will be on your ballot.



Phone (360) 417-2221
Website clallamcountywa.gov/elections
Email elections@clallamcountywa.gov
Visit VoteWA.gov for additional information

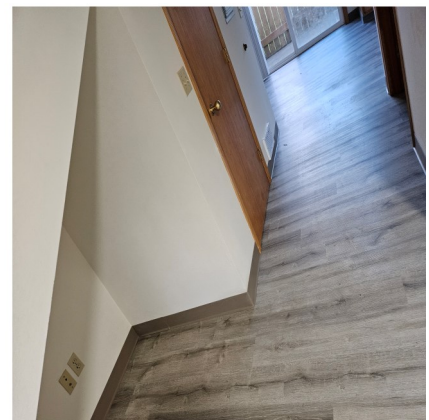


LEHA October 2024 Newsletter



The LEHA has recently completed 3 state inspections and the most frequent findings are as follows. Dirty hood vent filters, they can be washed with dish soap and water, or put in the dishwasher. They also noted dirty heater vent and exhaust fan covers, those can be vacuumed and wiped off. The third major finding was clutter, both inside and outside the units. The cooler weather is a great time to do some tidying up around the house, organize lawn items, and store all the summer clothes. This will ensure a clear path through the house in case of emergencies and make the exterior look sharp!

The LEHA office and the Whispering Breeze apartments are getting long needed updates in the way of new roofs, and we've finally finished updating the remainder of the apartments with LED lights and laminate flooring. The Charles Hopie units also received much needed roof cleanings. Below are some photos of the roofing and update progress.



WELCOME FALL

As the leaves begin to change and the air turns crisp, it's time to prepare for the cozy months ahead. Transitioning into fall involves some practical preparations. Here is a list of things you can do to help you prepare for the cooler months ahead:

HOME

- ⇒ Ensure your heater is in proper working order
- ⇒ Change air filters
- ⇒ Inspect and clean fireplace and chimney
- ⇒ Test smoke and carbon monoxide detectors, replace batteries
- ⇒ Check and replace worn weather stripping
- ⇒ Reverse your fans (they will circulate warm air if they turn clockwise)
- ⇒ Stock up on firewood – make sure it is stacked away from the house
- ⇒ Check the roof for obvious signs of damage (repair if needed)
- ⇒ Clean the gutters and downspouts
- ⇒ Clean the BBQ grill
- ⇒ Drain and stow hoses
- ⇒ Check exterior caulk and repair if needed
- ⇒ Clean debris from flower and garden beds
- ⇒ Rake up leaves and clear brush
- ⇒ Plant bulbs for spring flowers

VEHICLES

- ⇒ Check and top off fluids, change oil if needed
- ⇒ Inspect tire and brake quality (don't forget your spare tire)
- ⇒ Ensure your battery cable connections are tight, and the terminals are free from corrosion (batteries last 3-4 years, how old are yours?)
- ⇒ Inspect belts and hoses for wear
- ⇒ Change wiper blades
- ⇒ Prepare/update your emergency kit. Make sure you also have; a flashlight, gloves, ice scraper, jumper cables, basic tools, extra jacket, blanket.



REMINDER

If you have a Ductless Heat Pump in your home—please remember to clean the filters of your heat pump every month. This is a MAINTENANCE DUTY required to keep your unit working and providing the heat and cool that it is supposed to.

KEEPING THE FILTERS CLEAN IS IMPORTANT

HAPPY BIRTHDAY!

10/1 Lonnie Charles
10/1 Nicholas Kasakan
10/2 Serena Leilani Barkley
10/3 Anthony Francis
10/3 Daniel Bennett Sr
10/3 Luella Charles
10/4 Janet Francis
10/4 Joleen Svec
10/4 Molly Williams
10/4 Robert Charles
10/4 Samantha Dawson
10/5 Caige Lovell-Komatsu
10/5 Nelly Gloria
10/5 Robin Ryan
10/7 Crystal Dowling
10/7 Mario Laungayan
10/8 Dominik Johnson
10/8 Jordynn Rauch-Spencer
10/8 Kaleenah Holden
10/8 Teagan Bolstrom
10/8 William Bennett
10/9 David Bolstrom Jr
10/9 Jason Kardonsky
10/9 Jesse Bolstrom
10/11 Cody Bankson
10/11 Lucien Bolstrom
10/12 Charles Mike Jr
10/13 Christina Sampson
10/13 Dale Charles
10/13 Kenneth Chace III
10/14 Darrell Charles Jr
10/14 Robert Reynolds
10/14 Terry Stevens
10/15 Dorene Charles
10/15 Emily Deason
10/15 Joshua Charles
10/15 Preston Poirier
10/17 Carla Elofson
10/17 Cathy Cooke
10/17 Melissa Gilman
10/17 Mickey Black
10/17 Steve Lauderback
10/17 Teyah Elofson-Cross
10/18 Eli Tipler
10/18 Jameson Cabras-Boyd
10/18 Jesse Vail
10/18 Keeoma Messenger
10/18 Ryan Clark
10/18 Valerie Ramirez
10/19 Chelsea Sanders
10/19 Jhene' Laungayan
10/19 Kody Muck
10/19 Norma Adams
10/20 Daniel Romero
10/21 Oliver Martinez
10/22 Janelle Clifford
10/22 Joey Gloria
10/23 Ariel Springer
10/23 Kiara Springer
10/23 Maurice Pitchford
10/24 Kelsie Gish
10/25 Jayden Tejano
10/25 Maximus Sero
10/25 Nicholas Runningwolf
10/26 Brittany Johnson
10/26 Paisley Charles
10/26 Rachel Schaeffer-Karrer
10/27 Levi Charles
10/27 Wesley Wilson
10/28 Christina Bennett
10/28 Jallicynn Clark
10/28 Kirsten Marrs
10/29 Benjamin Charles Jr
10/29 Frank Charles
10/29 Thomas Carter
10/30 Alvin Francis
10/30 Aria Hellriegel
10/30 Cydne Moore
10/30 Margie Sampson
10/30 Mary Cantreras
10/31 Joseph Turrey
10/31 Luana Arakawa
10/31 Robert Francis IV

October 2024						
Sun	Mon	Tue	Wed	Thu	Fri	Sat
		1 Gym Hours 8am-830pm Elwha Youth Basketball 330pm Women's Night 5pm-7pm Women's Basketball 7pm	2 Gym Hours 6am-830pm Elders Movement 10am & 11am Dr Dish w/Nathaneal 5pm Adult Volleyball 630pm	3 Gym Hours 8am-830pm Noon Basketball 12pm Family Activity w/ Nate 5pm Pitching 5pm Adult Basketball 7pm	4 Gym Hours 8am-830pm Elders Movement 10am & 11am Chair Volleyball 12pm Fun Friday Activity 5pm	5 Gym Hours 10am-6pm Game Day 11am Switch Games 1pm Dr Dish Shooting Machine 330pm
6	7 Gym Hours 8am-830pm Elders Movement 10am & 11am Lunchtime Fitness 12pm Dodgeball 5pm Adult Basketball 630pm	8 Gym Hours 8am-830pm Elwha Youth Basketball 330pm Women's Night 5pm-7pm Women's Basketball 7pm	9 Gym Hours 6am-830pm Elders Movement 10am & 11am Dr Dish w/Nathaneal 5pm Adult Volleyball 630pm	10 Gym Hours 8am-830pm Noon Basketball 12pm Family Activity w/ Nate 5pm Pitching 5pm Adult Basketball 7pm	11 Gym Hours 8am-830pm Elders Movement 10am & 11am Chair Volleyball 12pm Fun Friday Activity 5pm	12 Gym Hours 10am-6pm Fun Activity 11am Mushroom Ball 1pm Movie in Gym 330pm
13 Gym Reserved	14 Gym Hours 8am-830pm Elders Movement 10am & 11am Lunchtime Fitness 12pm Dodgeball 5pm Adult Basketball 630pm	15 Gym Hours 8am-830pm Elwha Youth Basketball 330pm Women's Night 5pm-7pm Women's Basketball 7pm	16 Gym Hours 6am-830pm Elders Movement 10am & 11am Dr Dish w/Nathaneal 5pm Adult Volleyball 630pm	17 Gym Hours 8am-830pm Noon Basketball 12pm <i>Rec Staff Training 3-430pm</i> Family Activity w/ Nate 5pm Pitching 5pm Adult Basketball 7pm	18 Gym Hours 8am-830pm Elders Movement 10am & 11am Chair Volleyball 12pm Fun Friday Activity 5pm	19 Gym Hours 10am-6pm Elwha Youth Basketball Camp 11am K-2nd Grade 1pm 3rd-6th Grade 4pm MS/HS
20	21 Gym Hours 8am-830pm Elders Movement 10am & 11am Lunchtime Fitness 12pm Dodgeball 5pm Adult Basketball 630pm	22 Gym Hours 8am-830pm Elwha Youth Basketball 330pm Women's Night 5pm-7pm Women's Basketball 7pm	23 Gym Hours 6am-830pm Elders Movement 10am & 11am Dr Dish w/Nathaneal 5pm Adult Volleyball 630pm	24 Gym Hours 8am-530pm Limited Gym Use Elders Event Setup	25 Gym CLOSED Elders Event in Gym	26 Gym Hours 10am-6pm Elwha Youth Basketball Tournament 10am K-2nd Grade 1pm 3rd-6th Grade 4pm MS/HS
27	28 Gym Hours 8am-830pm Elders Movement 10am & 11am Lunchtime Fitness 12pm Dodgeball 5pm Adult Basketball 630pm	29 Gym Hours 8am-530pm Limited Gym Use Halloween Party Setup	30 Community Halloween Party	31 Gym Hours 8am-830pm Noon Basketball 12pm Family Activity w/ Nate 5pm Pitching 5pm Adult Basketball 7pm	Hours Subject to Change Open on Saturday's Women's Night Every Tuesday 5pm-7pm Open at 6am on Wednesday's	



SXWÚPČ

2024

[s-v-x-w-upč] [s-v-old-salmon] | • old-salmon, kelt, any salmon after spawning.

n ə m á s k w á č i s u n d a y	s č i ʔ ə k w t n á t m o n d a y	s c ə ŋ ə n á t t u e s d a y	s t x w t n á t w e d n e s d a y	s ŋ ə s t n á t t h u r s d a y	s t ʔ č š t n á t f r i d a y	s a t
In preparation for hosting Canoe Journeys next year, each month will be dedicated to a specific project, so come summer time, you will have full regalia. October= Shawls November= Fabric and Wool Vests	1 9-12pm Canoe Journey Gift making at Culture Club <i>Shawl class 4pm-7pm</i>	2 9-12 pm Canoe Journey Gift making at Culture Club	3 9-12 pm Canoe Journey Gift making at Culture Club	4	5	
6	7 10-1 pm Crafts in Elders Lounge <i>4-7 pm Shawl class</i>	8 9-12pm Canoe Journey Gift making at Culture Club <i>5-7 pm Royalty Pageant</i>	9 9-12 pm Canoe Journey Gift making at Culture Club	10 9-12 pm Canoe Journey Gift making at Culture Club	11	12
13	14 10-1 pm Crafts in Elders Lounge <i>4-7 pm Shawl class</i>	15 <i>4pm-7pm Shawl class</i>	16 4pm-7pm Canoe Journey Gift making at Culture Club	17 9-12 pm Canoe Journey Gift making at Culture Club	18	19
20 <i>9am-3pm Shawl class</i>	21 10-1pm Crafts in Elders Lounge <i>4pm-7pm Shawl class</i>	22 <i>5-7 pm Drum Group</i>	23	24 9-12 pm Canoe Journey Gift making at Culture Club	25 <i>next 'S'ayem' Dance @ Port Gamble SKlallam 5:30pm</i>	26
27	28 Crafts in Elders Lounge 10-1pm <i>4pm-7pm Shawl class</i>	29 <i>9 am - 12pm Shawl class</i>	30	31	Contact Info: Harmony Arakawa 360.452.8471 x7422	

ENGINEERED LOG JAM TOUR AND PLANTING

EVENTS THIS FALL: Lower Elwha Klallam Tribe’s Natural Resources Department is hosting several Engineered Log Jam tours and planting events:

LEKT’s Natural Resources Department will be hosting an LEKT community Engineered log jam tour/



planting event on Wednesday, November 6th from 10 am- 2pm at the newly constructed Ranney Reach engineered log jams. These engineered log jams were constructed in order to improve salmon habitat and floodplain function. If interested in joining this event, please email: allyce.miller@elwha.org or call (360) 457-4012 ext:7489

Clallam Conservation District is partnering with LEKT to host the following two volunteer events: 1) Engineered log jam tour/



planting event on October 25th from 10am- 2pm at the new Ranney Reach log jams and 2) A planting event on Saturday October 26th from 9:30am-11:30am OR 12:30pm-2:30pm at former Lake Aldwell in order to boost conifer presence for optimal salmon habitat and ecosystem function. If



interested in participating either of the above two events, please register at this website:

www.clallamcd.org/orcaevents

Soup For The Soul



Support Circle for Victims and Survivors



Please join LEFA on the 1st and 3rd Tuesday each month from 11am—1pm Beginning September 17th, 2024 at the Lower Elwha Social Services Building 3080 Lower Elwha Rd Ages 18+

Other upcoming Support Circles: October 1, October 15, November 5, November 19

Contact Us For More Information

Beatriz Arakawa, Program Manager/Victim Advocate: (360) 565-7257 Ext 7453
24/7 Hotline (360) 460-1745

No OVW Funds are used to purchase food.

This project was supported by Grant #15JOVW22GG3388TRIB awarded by the Office on Violence Against Women, U.S. Department of Justice. The opinions, findings, conclusions, and recommendations expressed in this publication/program/exhibition are those of the author(s) and do not necessarily reflect the views of the U.S. Department of Justice.





**COSTUME
CONTEST**
all ages



**CAKE
WALK**

Join us for a
SPOOK
Tacular
PARTY

**THRILLER
DANCE
COMPETITION**



Wednesday October 30th
4:00 PM to 7:00 PM

**Lower Elwha
Gymnasium**



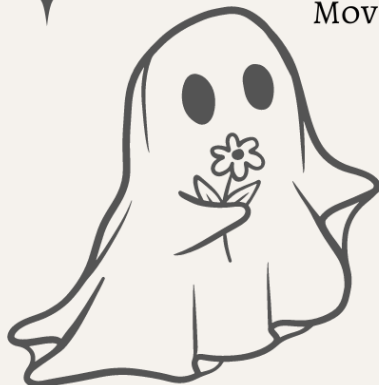
CHILI COOK-OFF

Activities in dining hall

1:00 PM to 4:00 PM

MOVIE | PUMPKIN PAINTING | APPLE BOBBING

HAUNTED HOUSE
Enter at your own risk



Contact: Nancy Hamilton
360-912-1302





PLEASE JOIN US FOR LEKT'S

ANNUAL CHILI COOK-OFF



**COMMUNITY:
PLEASE DONATE
PRE-COOKED FRY BREAD
AND CORN BREAD
TO THE MEAL**

**BRING FRY
BREAD AND
CORN BREAD
TO KITCHEN
@4:00PM**

CHILI COOK-OFF!

**WEDNESDAY,
OCTOBER
30TH**



**4:00PM-5:00PM
LEKT
DINING HALL**

REGISTER

Please bring your chili entry to the LEKT Tribal Center Kitchen at 4:00pm in a crock pot. Judging will take place between 4:30pm and 5:00 pm. All entry chili to be served to the community at 5:00pm. Registry deadline is 10/29/24 @3:00pm



**PLACE WILL
RECIEVE A
\$25
LEFF GIFT CERT
AND RIBBON**



**PLACE WILL
RECIEVE A
\$50 LEFF GIFT
CERT
AND RIBBON**



**PLACE WILL RECIEVE A
\$100
LEFF GIFT CERT,
RIBBON,
AND BRAGGING RIGHTS!**



2024 Elwha River Restoration Update. LEKT Natural Resources has been working to install logjams on the Elwha River this summer. 17 logjams have been built to improve salmon habitat. Work is occurring on the river near Boston Charlie's former homestead by the old Sisson hole. Work will be completed by early October.



Happy Birthday Darrell
From Your Biggest Fans!



A graphic advertisement for a flu shot. It features a large white circle in the center with a syringe icon. The text "Get a Flu Shot Today" is written in large, bold letters. Below it, in smaller text, is "BECAUSE A FLU SEASON IS COMING". At the bottom, it says "GET YOUR FLU SHOT HERE: Lower Elwha Health Clinic 360-452-6252". The background is light blue with various medical icons like a bandage, a pill, and a first aid kit.

I would like to thank the North Olympic Healthcare Network Family Dental for always donating dental hygiene products to the Lower Elwha Food Bank. It is greatly appreciated.

Thank you,
Dorene Charles
Lower Elwha Food Bank Coordinator

THANK YOU
SO MUCH

Date	Resolution Number	Title	Vote		
			For	Against	Abstain
7/16/24	102-24	Approval of Executive Director CFO & Controller as Contact Persons for Pinnacle Bank	2	0	0
7/16/24	103-24	Approval of Executive Director CFO & Controller as Contact Persons for Salal Credit Union	2	0	0
7/16/24	104-24	Approval of Executive Director CFO & Controller as Contact Persons for Umpqua Bank	2	0	0
7/16/24	105-24	Approval of Executive Director CFO & Controller as Contact Persons for US Bank	2	0	0
7/16/24	106-24	Approval of Executive Director CFO & Controller as Contact Persons for Wells Fargo Bank	2	0	0
7/16/24	107-24	Approval of Executive Director CFO & Controller as Contact Persons for Charles Schwab and 401 K Plan	2	0	0
7/16/24	108-24	Approval of Executive Director CFO & Controller as Contact Persons for First Security Bank	2	0	0
7/17/24	109-24	Approval of FY23/24 Award to the LEKT for Support of Elwha River Ranney Reach Restoration	4	0	0
7/17/24	110-24	Approval of FY22 EPA/PSP Award to the LEKT for Support of Elwha River Ranney Reach Restoration	4	0	0
8/1/24	111-24	Approving Construction Agreement between LEKT & Pacific Northern Environmental LLC for Construction of the Tribe's Justice Center Renovation Expansion Project	3	0	0
8/1/24	113-24	2024 Research Agreement with Colorado State University	3	0	0
8/1/24	114-24	Approval of Agreement between WA Department of Commerce and LEKT for the Low-Income Household Energy Assistance Program	3	0	0
8/1/24	115-24	Approval of Registration Services Agreement with American Registry for Internet Numbers	3	0	0
8/1/24	116-24	Approval of 2024 Tribal Early Learning Fund Grant Application	3	0	0
8/1/24	117-24	Approval of Grant Application for Inflation Reduction Act Funding	3	0	0
8/1/24	118-24	Approval of Application for Tribal Early Learning Fund	3	0	0
8/1/24	119-24	Appointment of Representative to the WA Tribal Opioid & Fentanyl Response Task Force	3	0	0
8/1/24	120-24	Approval of Check Request to Transfer Funds from Bank of America AP Disbursement Account to Umpqua General Account	3	0	0

Date	Resolution Number	Title	Vote		
			For	Against	Abstain
7/16/24	83-24	Approval of Tribal Business Committee Signing Authority for First Security Bank	2	0	0
7/16/24	84-24	Approval of Tribal Business Committee Signing Authority for Bank of America	2	0	0
7/16/24	85-24	Approval of Tribal Business Committee Signing Authority for Charles Schwab and Northwest Plan Services	2	0	0
7/16/24	86-24	Approval of Tribal Business Committee Signing Authority for Pinnacle Bank	2	0	0
7/16/24	87-24	Approval of Tribal Business Committee Signing Authority for Salal Credit Union	2	0	0
7/16/24	88-24	Approval of Tribal Business Committee Signing Authority for Umpqua Bank	2	0	0
7/16/24	89-24	Approval of Tribal Business Committee Signing Authority for US Bank	2	0	0
7/16/24	90-24	Approval of Tribal Business Committee Signing Authority for Wells Fargo Bank	2	0	0
6/20/24	91-24	Authorization of FY 2024 Pacific Salmon Treaty Funds	3	0	0
6/20/24	92-24	Approval of the LEKT 2024 Tribal Member Retail Firework Stand Policy and Procedures	3	0	0
6/24/24	94-24	Adoption of Hunting and Fishing Rights for 2024-2025 season	3	0	0
7/8/24	95-24	LEKT Head Start and Early Head Start Enrollment Process P&Ps	4	0	0
7/8/24	96-24	Approval of 2024 HUD PRICE Grant Application	4	0	0
7/8/24	97-24	Office for Victims of Crime FY 2024 Tribal Victim Services Set-Aside Formula	4	0	0
7/8/24	98-24	Approving Residential Lease of Lower Elwha Reservation Lot #325	4	0	0
7/8/24	99-24	Approval of 2024 HUD PRICE Grant Application	4	0	0
7/16/24	100-24	Approval of Executive Director CFO & Controller as Contact Persons for Bank of America	2	0	0
7/16/24	101-24	Approval of Executive Director CFO & Controller as Contact Persons for Morgan Stanley	2	0	0

Tribal Center

2851 Lower Elwha Road
Port Angeles, WA 98363
360.452.8471

Executive Director

Tonya Clark, Ext. 7469

Tribal Operations Officer

Tia Skerbeck, Ext. 7420

CFO

Brian Carroll , Ext. 7464

Accounting

Jo Klinski, Ext. 7460

Rachelle Wheeler, Ext. 7465

Elena Lifoifoi, Ext. 7476

Jessica Wright, Ext. 7667

Jalen Sampson, Ext. 7462

Cedar Box Smoke Shop

4779 S Dry Creek Road
360.477.1170

**Children’s House of Learning
(Early Head Start, Head Start,
Child Care, Prenatal Program)**

291 Spokwes Dr—

360.504.3141

Lola Moses, Ext. 7471

Deann Lester, Ext. 3402

Deanna Murray, Ext. 7470

Ralena Cornelson, Ext. 7474

Darla Owens, Ext. 7475

Education

Jessica Egnew, Ext. 7425

Elwha Peaks Cannabis

4775 S Dry Creek Road
360.912.7533

Elwha River Casino

631 Stratton Road, 452.3005
Mike Watson, General Manager

Elder Services

Samantha Acosta, Ext. 7466

**Employment Services/HR/
TERO**

Sandra Johnson, Ext. 7429

Brandy Williams, Ext 7427

Enrollment Services

Maurice Raub, Ext .7477

Facilities & Maintenance

Warren Stevens, Ext. 7432

Food Bank

22 Spokwes Drive
360.504.3678

Gaming Commission

631 Stratton Road

360.452.5628

Elaina Begay, Director

Health Clinic

243511 Highway 101 West

360.452.6252

Lorinda Robideau,

Heritage Center

401 E. First Street,

360.417.8545

Nicole Volkmann, Ext. 2912

Housing Authority

22 Kwitsen Drive,

360.457.5116

Jennifer Hutto, Ext. 7554

Information Technology

Ken Giersch, Director Ext. 7541

Justice Center/Tribal Court

341 Spokwes Drive

360.452.6759

Klallam Counseling Services

243613 W Hwy 101,

360.452.4432

Stormy Howell, Ext. 7513

Law & Order/Police Dept.

Justice Center

341 Spokwes Drive

360.452.6759

Sam White, Chief of Police Ext.
2922

Library, Ext 7430

Lower Elwha Food & Fuel

360.477.1170

Natural Resources/Fish Hatchery

760 Stratton Road

360.457.4012

Matt Beirne, Ext. 7485

Planning & Development

Arlene Wheeler, Ext. 7437

Prevention Health/GYM

Jason Wheeler, Ext. 7440

Social Services

3080 Lower Elwha Road

360.565.7257

Rebecca Sampson-Weed, Ext.
7456

BUSINESS COUNCIL



Frances G. Charles
Tribal Chairwoman, Ext. 7411



Russ Hepfer
Vice Chairman, Ext. 7412



Melissa Gilman
Secretary/Treasurer Ext. 7414



Steve Joaquin Robideau
Council Member, Ext. 7413



Tia Skerbeck
Council Member, Ext. 7420

Dates to Remember:

- 10/1 Soup for the Soul Support Circle
- 10/2 Intro to MS Excel
- 10/8 Royalty Pageant
- 10/9 Internet Safety For Parents
- 10/10 Basic Budgeting Class
- 10/14 Indigenous Day
- 10/15 Soup for the Soul Support Circle
- 10/16 Using Email Class
- 10/22 Drum Group
- 10/23 DV Awareness Walk
- 10/23 Career Search Skills & Resume Workshop
- 10/25 Dance at Port Gamble
- 10/26 Youth Basketball Tournament
- 10/30 Community Halloween Party & Chili Cook-Off
- 10/30 Digital Footprint Class
- 10/31 Halloween



To submit an article or join our email distribution list please send a note to Newsletter@Elwha.org.

Submissions must be in an editable format, and will be adjusted to fit our publication.

You can view past editions at:

<https://www.elwha.org/newsletter/>

